



## **Newsletter March 2005**

The Ohio Dressage Society (ODS) is a Group Member Organization (GMO) of the United States Dressage Federation (USDF) and its members are USDF Group Members. The Ohio Dressage Society is in Region Two of the USDF.



### **Remember meeting date change! Next Meeting Feb. 27th**

The next meeting will be on Sunday Feb 27<sup>th</sup> at Betsy Hyde's in Pataskala. The meeting will start at 2 p.m. (snacks to share) and then we will have an Equine Massage Demonstration by Patricia Whalen-Shaw, an equine massage therapist for many years. This promises to be a fun and very educational meeting.

The address is 6710 Gale Rd, Pataskala, 43062. From Columbus, take 70 get off at St Rt 158 (Flying J has cheap gas). At the end of the exit ramp turn left. Stay straight on that road, (watch your speed- 35mph). Go through the one-light town of Kirkersville, and about ½ mile out of town turn right on Refugee Road. Go about 1/3 mile and turn left on Gale Road. Betsy's is the last house on the left before the railroad tracks. She has a yellow & brown house. Please park down at the barn.

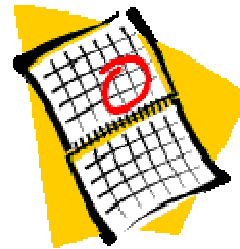


East,

### **MEMBERSHIP RENEWALS DUE NOW!**

Please complete the enclosed/attached form and send it to Chris Gnedovic with your membership dues:

Chris Gemmel-Gnidovec  
4380 Blacklick Rd NW  
Pataskala, OH 43062



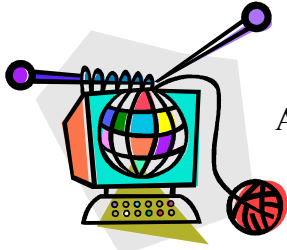
Gemmel-



### **If you missed the Awards Dinner....**

Amy Rothe-Hietter

On Saturday February 5<sup>th</sup>, members met at Waterford United Methodist Church for our Annual Pot-Luck Year-End Banquet. Much fun was had by all. Mary and Alisha McNutt, Ashley Hudson and Joe Hietter helped to set-up the tables and chairs. We started with a wonderful feast of all kinds of great food, had a short meeting and Lynn Hamler gave a presentation on Laura's behalf, complete with pictures of life in Germany. Then we presented the awards for the year. I personally am so proud that we have so many of our members going for year end awards, and I look forward to that number growing in the future. Deb Eiden, Lynn Hamler and many other people helped clean up after. We are fortunate to have such a nice facility as the Waterford Church to use free of charge.



**Remember our website!** [www.ohiodressagesociety.com](http://www.ohiodressagesociety.com)

Amy Rothe-Hietter keeps our website up to the minute! Visit the site and click on.....

Upcoming Events

...for information about our meetings and events

ODS Newsletters

...for our past newsletters

Photos

...for photos (including you and yours if you would like – just send the digital pictures to Amy to post on the site)

About ODS

...for a list of the officers and their e-mail addresses

## ODS Awards Youth Scholarship



Laura Hamler has been awarded the ODS Youth Scholarship for 2005. The Youth Scholarship Committee announced the recipient of this year's Scholarship at the annual Awards Banquet on February 5, 2005.

Lynn Hamler accepted the Scholarship for her daughter, since Laura had to return to Germany early in January. Lynn explained to those attending the banquet a little about the life Laura is living while studying with Conrad Schumacher. She also passed around some photos that Laura had sent home depicting the Schumacher farm, the horses, the surrounding countryside and some of the people she has met.

Laura has already been in Germany for 6 months and hopes to stay there working, riding and training with Conrad for as long as she possibly can. Laura and Lynn Hamler have recently purchased (with the help of a wonderful sponsor!) a Grand Prix Horse! Laura hopes to compete on him this year, and Lynn might be making a trip to Germany to ride the new horse too!

Laura made the cover of the recent USDF Region 2 Newsletter! There was a story about her, where she came from, things she has done, and our Youth Scholarship Program awarding her a scholarship for 2004. We are very proud of her. ODS wishes Laura well and looks forward to having her back home in Ohio in the future.

## Learn how to scribe!

The ODS Ride-A-Test on March 13 needs a scribe, and this is a great low-pressure chance to learn how to scribe. If you would like to do this, please call Devon Whittaker at 614-865-9939. For more information about the Ride-A-Test, see the second page of this newsletter.



the

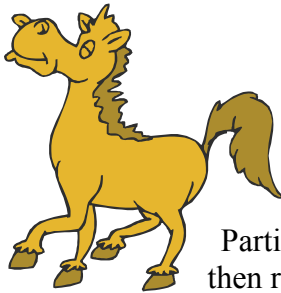
## Plans for a Fuzzy Pony Show

Amy Rothe-Heitter is working on this - please check the website for information.



## ODS Logo Polo Available

At the awards banquet several of you requested to be able to buy a logo polo. I am pleased to announce that they may be ordered from Julie Greenlee at 419-468-0019. The cost is \$25 to benefit the year-end awards program. If you have a couple of color choices it will help to make her job easier.



## Ride-A-Test on Sunday, March 13 at North Star Stables

Warm-up for the show season

What?

Participants pay a small fee to ride a test of their choice, get feedback from a judge, then ride the test again. Participants receive a score sheet for each ride. There will be a 2 test/rider limit.

Where?

North Star Stables is located at 7463 Liberty Rd., in Powell.

Who?

ODS is organizing the event and Amy Rothe-Hietter, a graduate with distinction from the USDF "L" Program, will be judging.

How?

Call Devon Whittaker to register at 614-865-9939 by March 11<sup>th</sup>. Fees will be paid and releases will be signed that day.

How much?

FREE to ODS Youth Members!

ODS Adult Members - \$10/test

Non-member Youth and Adult - \$15/test (Non-members can join ODS that day if they would like.)

All money generated will go to the ODS Youth Scholarship fund



## Spring Schooling Shows Scheduled

Yes, there are only a few more weeks of winter left and we can all look forward to what spring brings: longer days, tulips, mud and the opening of the show season.

This year a number of schooling shows are being scheduled at Hobby Horse Hill to help us all prepare for better performances. Lynn Hamler is planning shows

once per month to help give riders feedback on their progress. Lynn offers two

warm-up rings, a large outdoor test ring, bathrooms and ample trailer parking at her facility. A pot luck

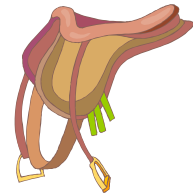
luncheon will be shared. Call Lynn to register at 740-694-5150.

Show dates are: May 14, June 25, July 16, August 27, September 17 and October 1<sup>st</sup>.



## Newsletter by E-mail

If you would like to save postage and get our newsletter fast, send your e-mail address to Sherrie Ridenour at [sherrie@columbus.rr.com](mailto:sherrie@columbus.rr.com). Put "ODS" in the subject line so I know what it is about, and let me know if you want it without graphics. It will be sent as a word document attachment. I use Norton antivirus and keep it up to date. The newsletter is also available on the website as an Adobe pdf document.



Also, members can list equine-related items for sale/services in the newsletter.



### Minutes for February 5, 2005 ODS Meeting – 2004 Awards Banquet

Submitted by: Devon Whittaker, Secretary

The meeting was held at Waterford Methodist Church and was called to order at 4:00pm. Attending were” Jessica Miltimore, Anne Miltimore, Levi Miltimore, Kathy Painter, Alisha McNutt, Lisa Carifa, Julie Greenlee, Mary Jo Weingart, Amelia Smith, Sara Johnson, JoAnn Fletcher, Dick Fletcher, Debbie Eiden, Bryn Eiden, Madeline Bletzacker, Linda Dillon, Chris Gemmel-Gnidovec, Carol May, Amy Rothe

The meeting opened with an invitation to eat the pot luck dinner we all provided.

Amy Rothe-Heitter presided over the remainder of the meeting, first announcing a schedule change for the next meeting. It will be held on Sunday, February 27<sup>th</sup> at Betsy Hyde’s farm at 2pm in the afternoon. The subject is an equine massage demonstration by Patricia Whalen-Shaw of Integrated Touch Therapies. A brief business meeting will precede the demonstration.

Amy encouraged members to consider holding schooling shows at their farms. Lynn Hamler announced she will have one show per month, starting in May and through Autumn.

Amy announced that newsletters would be published more often in 2005. They will be distributed by e-mail to save costs, unless hardcopy is requested. E-mail addresses or changes should be sent to Sherrie Ridenour or Chris Gemmel-Gnidovec. Their e-mail addresses can be found on the website.

Lynn Hamler is working on a clinic to be conducted by Conrad Schumacher in the spring. Details have not been finalized, but Lynn will be pursuing it with him.

Lynn Hamler presented two photoboards showing Laura’s clinic sessions, held at Hobby Horse Hill in December and Laura’s environment in Germany. Laura has procured a Grand Prix level Danish Warmblood, Nolde, to work with and show this year. She is also making progress with Kuerly, working in hand on the piaffe and 1-tempi

Kathy Painter informed us that Coggins test can no longer be delivered directly to members and must be delivered via the Vet taking the Coggins. Members are advised that this may require more lead time to have results before show entry deadlines.

Amy Rothe-Heitter then presided over the presentation of awards, which were sponsored in part by Summerfield Saddlery. Awards were presented to: Volunteers, Young Riders for rated and schooling shows, Adult Riders for rated and schooling shows, Horses for rated and schooling shows, Show Managers, rider Certificates and venerated Vintage riders.

## How are ODS year-end awards calculated?



At the end of the competition year each competitor is responsible for sending copies of their test fronts in for Year End Awards calculations. If you competed in several USDF/USEF shows, you can go to USDF.org and print a copy of your year's scores and send that in. Remember that schooling shows will not show on the USDF score sheet, so those test fronts need to be copied and sent in to the person calculating the scores. The best time to do this is after your last show for the year, or by November at the latest. This gives the person calculating the scores time to do it and then order the appropriate number of awards.

Once the scores are received, they are put into a spreadsheet. Each horse's scores, no matter how many people rode him, are credited to that horse. This could result in an award for a school horse ridden by several students. The owner of the horse must be an ODS member. The top 4 scores at each level, which must be from at least 2 different judges and from 2 different shows, are averaged. This average is what is used.

Each rider's scores, no matter how many horses the rider rode to earn those scores, are credited to that rider. If a rider does not own a horse and used a lesson horse in one show and then used a friend's horse in another show, the rider could earn the required minimum of 4 scores per level (from at least 2 different judges in at least 2 different shows) and could earn a year end award. Those four scores, or the highest 4 scores from all rides, would be averaged.

The categories are as follows:

- Competing at rated shows; horse, adult rider
- Competing at schooling shows; horse, adult rider
- Youth (under 21 as of Jan 1 of the year competing)

Scores are combined rated and schooling, but the horse(s) the youth rode is (are) eligible for awards under the rated or schooling category as long as the horse has a minimum of 4 scores in each category at each level.

“Certificates” are a rider award; an accumulative achievement. A certificate is awarded to the rider who earns one. The rules for certificates are:

- This is a rider award, different horses may be used
- Must have 4 scores above the listed score for the level from at least 2 judges
- At least one of the scores must be at the highest test in the level
- Adult and youth (21 yrs. as of Jan 1) are equally eligible
- Scores are cumulative, may be earned over the course of 1 or more years
- A one-time award for each rider at each level
- Scores from schooling and rated shows count.

|                    |                             |               |     |
|--------------------|-----------------------------|---------------|-----|
| Introductory level | Aspiring rider certificate  | 4 at or above | 57% |
| training level     | Qualified rider certificate | 4 at or above | 57% |
| first level        | bronze certif               | 4 at or above | 55% |
| second level       | silver certif               | 4 at or above | 55% |
| third level        | gold certif                 | 4 at or above | 55% |
| fourth level       | platinum certif             | 4 at or above | 55% |
| Prix St George     | ruby certif                 | 4 at or above | 55% |
| Intermediaire I    | sapphire certif             | 4 at or above | 55% |
| Intermediaire II   | emerald certif              | 4 at or above | 55% |
| Grand Prix         | diamond certif              | 4 at or above | 55% |

## 2004 Ohio Dressage Society Awards



### RATED SHOWS

| HORSE                 | SCORE  | ADULT RIDER       | SCORE  |
|-----------------------|--------|-------------------|--------|
| <i>TRAINING LEVEL</i> |        |                   |        |
| Antarez               | 70.48  | Sherrie Ridenour  | 70.48  |
| Duval                 | 61.54  | Carol May         | 61.54  |
| <i>FIRST LEVEL</i>    |        |                   |        |
| Arswann               | 58.581 | Betsy Hyde        | 58.581 |
| Yo                    | 57.689 | Amy Rothe-Hietter | 57.689 |
| Shawnee               | 56.74  | Ann Miltimore     | 56.740 |
| <i>SECOND LEVEL</i>   |        |                   |        |
| Hersheys Kiss         | 62.991 |                   |        |
| Shawnee               | 54.943 | Ann Miltimore     | 54.943 |
| <i>THIRD LEVEL</i>    |        |                   |        |
| Listo                 | 67.142 | Lynn Hamler       | 67.142 |
| Duval                 | 53.424 | Amy Rothe-Hietter | 53.424 |

### SCHOOLING SHOWS

| HORSE                     | SCORE  | ADULT RIDER       | SCORE  |
|---------------------------|--------|-------------------|--------|
| <i>INTRODUCTORY LEVEL</i> |        |                   |        |
| Josie                     | 63.705 |                   |        |
| Grey Spirit               | 63.416 | Mary Jo Weingart  | 63.413 |
| <i>TRAINING LEVEL</i>     |        |                   |        |
| Go Laddie Go              | 68.351 |                   |        |
| Duval                     | 66.27  | Carol May         | 66.223 |
| Mattie                    | 63.535 |                   |        |
| Yo                        | 62.25  | Amy Rothe-Hietter | 64.609 |
| Josie                     | 60.532 |                   |        |
| <i>FIRST LEVEL</i>        |        |                   |        |
| Arswann                   | 65.754 | Betsy Hyde        | 65.754 |
| Blue                      | 64.182 | Amy Rothe-Hietter | 65.663 |
| Basadda                   | 63.416 | Mary JoWeingart   | 63.685 |
| Mo                        | 62.552 | Kathy Painter     | 62.552 |

### YOUTH RIDERS

#### *INTRODUCTORY*

|                  |        |
|------------------|--------|
| Jessie Miltimore | 63.815 |
| Levi Miltimore   | 63.705 |

#### *TRAINING LEVEL*

|                 |        |
|-----------------|--------|
| Bry Eiden       | 70.982 |
| Jessi Miltimore | 65.535 |
| Levi Miltimore  | 60.532 |
| Alicia McNutt   | 60.104 |

#### *SECOND LEVEL*

|               |        |
|---------------|--------|
| Sara Anderson | 62.991 |
|---------------|--------|

### Rider Certificates

Aspiring Rider Certificate (Intro Level)

Mary Jo Weingart

Qualified Rider Certificate (Training Level)

Sherrie Ridenour

Bronze Certificate (First Level)

Kathy Painter

Betsy Hyde

Mary Jo Weingart

